

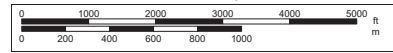
Data use subject to license.

© DeLorme. Topo North America™ 9.

www.delorme.com



Scale 1 : 34,375



1" = 2,864.6 ft

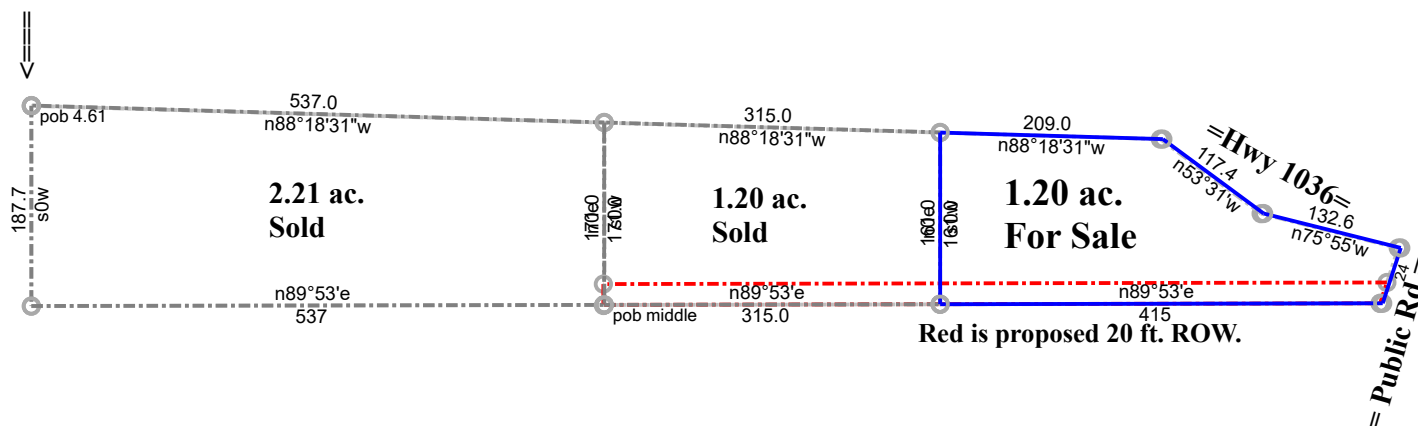
Data Zoom 12-5



**POB is:**  
**South 991.0 ft.**  
**from the**  
**NW corner**  
**of SW 1/4,**  
**of NE 1/4,**  
**of SW 1/4,**  
**of Sec 15-6-5.**

**4.61 ac. Parent Tract**

**30.5207**  
**90.6948**



**1.20 ac. in Sec 15, T6S, R5E, Livingston Parish, LA.**

**1.20 ac. Sec 15, T6S, R5E**

**12/5/2024**

**Scale: 1 inch= 180 feet**

**File: 1.20 ac. Sec 15, T6S, R5E Holden, LA.ndp**

Tract 1: 4.6074 Acres (200700 Sq. Feet), Closure: n00.0000e 0.00 ft. (1/655301), Perimeter=2816 ft.

Tract 2: 2.2105 Acres (96291 Sq. Feet), Closure: s43.4250w 0.34 ft. (1/4252), Perimeter=1433 ft.

Tract 3: 0.3312 Acres (14429 Sq. Feet), Closure: n50.5938e 0.83 ft. (1/1806), Perimeter=1503 ft.

Tract 4: 1.2001 Acres (52278 Sq. Feet), Closure: n65.5507w 0.15 ft. (1/6430), Perimeter=962 ft.

Tract 5: 1.2061 Acres (52539 Sq. Feet), Closure: n06.2042w 0.01 ft. (1/80792), Perimeter=1090 ft.

- 01 s0w 187.8
- 02 n89.5300e 1264.6
- 03 n18.0317e 54.59
- 04 n75.55w 132.6
- 05 n53.31w 117.4
- 06 n88.1831w 1058.97
- 07 @0
- 08 s0w 187.7
- 09 n89.53e 537
- 10 n0e 171.0
- 11 n88.1831w 537.0
- 12 @10
- 13 n89.53e 727.5
- 14 n18.0317e 20.5
- 15 s89.53w 734.5
- 16 s0w 20.0
- 17 @10
- 18 n89.53e 315.0

- 19 n0e 161.0
- 20 n88.1831w 315.0
- 21 s0w 171.0
- 22 @19
- 23 n89.53e 415
- 24 n18.0317e 54.59
- 25 n75.55w 132.6
- 26 n53.31w 117.4
- 27 n88.1831w 209.0
- 28 s0w 161.0



1.20 ac. Sec 15, T6S, R5E 12/5/2024

Scale: 1 inch= 201 feet File: 1.20 ac. Sec 15, T6S, R5E Holden, LA yi18.ndp

Tract 1: 4.6074 Acres (200700 Sq. Feet), Closure: n00.0000e 0.00 ft. (1/655301), Perimeter=2816 ft.  
 Tract 2: 2.2105 Acres (96291 Sq. Feet), Closure: s43.4250w 0.34 ft. (1/4252), Perimeter=1433 ft.  
 Tract 3: 0.3312 Acres (14429 Sq. Feet), Closure: n50.5938e 0.83 ft. (1/1806), Perimeter=1503 ft.  
 Tract 4: 1.2001 Acres (52278 Sq. Feet), Closure: n65.5507w 0.15 ft. (1/6430), Perimeter=962 ft.  
 Tract 5: 1.2061 Acres (52539 Sq. Feet), Closure: n06.2042w 0.01 ft. (1/80792), Perimeter=1090 ft.

01 e10365.926m n9698.009m	20 n89.53e 315.0
02 s0w 187.8	21 n0e 161.0
03 n89.5300e 1264.6	22 n88.1831w 315.0
04 n18.0317e 54.59	23 s0w 171.0
05 n75.55w 132.6	24 @21
06 n53.31w 117.4	25 n89.53e 415
07 n88.1831w 1058.97	26 n18.0317e 54.59
08 @0	27 n75.55w 132.6
09 e10365.926m n9698.009m	28 n53.31w 117.4
10 s0w 187.7	29 n88.1831w 209.0
11 n89.53e 537	30 s0w 161.0
12 n0e 171.0	
13 n88.1831w 537.0	
14 @12	
15 n89.53e 727.5	
16 n18.0317e 20.5	
17 s89.53w 734.5	
18 s0w 20.0	
19 @12	

Circa 2024



7 ft

© 2024 Google



Email Print

# Louisiana Flood Map

## 30.5211 -90.6968



### Visible Layers

- Effective FIRM (04/03/2012)
- Bing Aerial

### Point Coordinates

Point #	Lat., Long.
1	30.5211, -90.6968

Flood information in this table is from the: Effective FIRM (04/03/2012)

Point	Panel ID	Flood Zone	BFE	Ground Elevation	BWS('13)*
1	22063C0165E 4/3/2012	AE	manual	40.6	91-99 mph

1. **Ground Elevation** is provided by USGS's elevation web service which provides the best available data for the specified point. If unable to find elevation at the specified point, the service returns an extremely large, negative value (-1.79769313486231E+308).
2. **BWS** is provided by the LSU AgCenter's basic wind speed web service developed for the 2012 IRC building codes.

Floodplain data that is shown on this map is the same data that your flood plain administrator uses. This web product is not considered an official FEMA Digital Flood Insurance Rate Map (DFIRM). It is provided for information purposes only, and it is not intended for insurance rating purposes. Please contact your local floodplain administrator for more information or to view an official copy of the FIRM or DFIRM.